



American Technology
CORPORATION

Shaping the future of sound™

Mounting Brackets for HSS by OmniMount®

The Model R220A units are supplied with two mounting studs (bolts) protruding from the center of the rear of the device.

The following OmniMount devices will bolt directly to the rear of the HSS unit. (Note: All Series 20.5 OmniMount devices will attach to the R220A units.



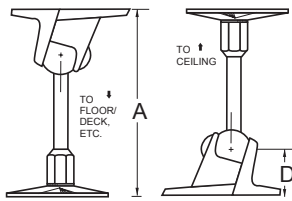
For HSS units
model # R220A

You can "Download Detailed Specifications" for additional models and options by visiting:
<http://www.omnimount.com/product.asp?p=54>

OmniMount Model # 20.5 STX-MP BLACK

STX-MP
ST WITH MOUNTING
PLATE

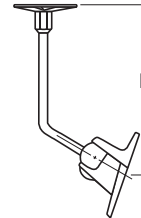
(most common usage)



	20.5 SERIES
A	6 5/8" 168.3 mm
B	6 1/2" 165.1 mm
C	7 1/2" 190.5 mm
D	1 3/4" 44.5 mm

OmniMount Model # 20.5 CA BLACK

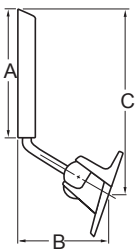
CA
CEILING
(HORIZONTAL
SURFACE) TO BACK
OR SIDE OF SPEAKER



	20.0 SERIES
A	6 1/4" 158.8 mm
B	4 5/8" 117.5 mm
C	9 1/2" 241.3 mm
D	9" 228.6 mm
E	10" 254.0 mm

OmniMount Model # 20.5 WA BLACK

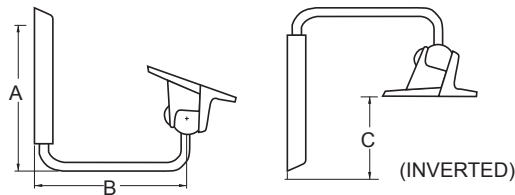
WA
WALL (VERTICAL
SURFACE) TO BACK
OR SIDE OF SPEAKER
(VERTICAL SURFACE)



	20.0 SERIES
A	6 1/4" 158.8 mm
B	4 5/8" 117.5 mm
C	9 1/2" 241.3 mm
D	9" 228.6 mm
E	10" 254.0 mm

OmniMount Model # 20.5 WB BLACK

WB
WALL (VERTICAL SURFACE) TO
BOTTOM OR TOP OF SPEAKER
(HORIZONTAL SURFACE) MAY BE
USED INVERTED

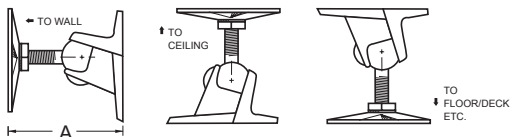


	20.0 SERIES
A	7 3/8" 187.3 mm
B	7" 177.8 mm
C	3 1/8" 79.4 mm

OmniMount Model # 20.5 ST-MP BLACK

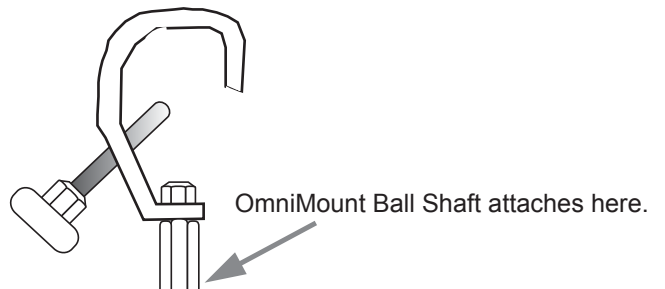
(mounts close to the wall, minimum ability to tilt HSS)

ST-MP
ST WITH MOUNTING
PLATE



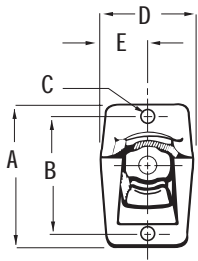
	20.5 SERIES
A	3 7/8" 98.4 mm
B	3 7/8" 98.4 mm
C	4 3/4" 120.7 mm
D	1/2" 12.7 mm

OmniMount Model # 20.5 C-CLAMP



ADDITIONAL MEASUREMENT INFORMATION

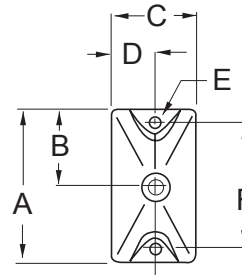
OmniMount Clamp Assembly



This part attaches to the rear of the HSS unit.

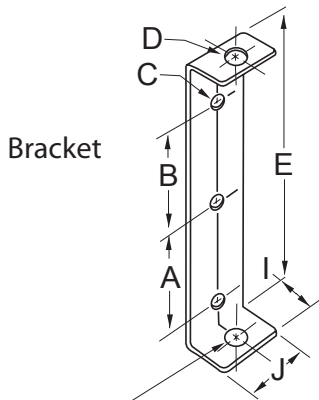
20.5 SERIES 2 HOLE	
A	3 5/8" 92.0 mm
B	3" 76.2 mm
C	1/4" 6.4 mm
D	2 3/16" 55.6 mm
E	1 3/32" 27.8 mm

This part attaches to the wall, ceiling, or floor.
(for model: STX-MP, CA, & ST-MP)



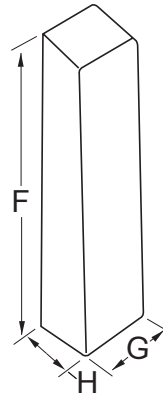
20.5 SERIES	
A	3 3/16" 81.0 mm
B	1 19/32" 40.5 mm
C	2 1/4" 57.2 mm
D	1 1/8" 28.6 mm
E	1/4" 6.4 mm
F	2 9/16" 65.1 mm
G	NA

This part attaches to the wall: (for model: WA & WB)



For 30.0/60.0 WBX models diameter is 3/4".

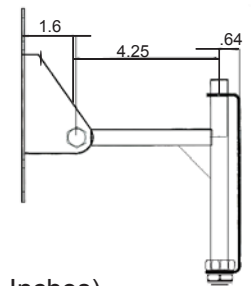
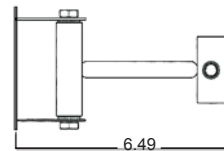
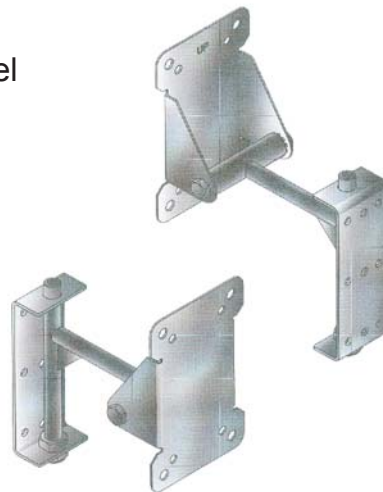
Bracket Cover



20.5 - 30.0 SERIES	
A	2 1/8" 53.9 mm
B	2" 50.8 mm
C	5/16" 7.9 mm
D	7/16"-1/2" 11.1 mm-12.7 mm
E	5 7/16" 138.1 mm
F	6 3/16" 157.2 mm
G	1 13/16" 46.0 mm
H	1 1/8" 28.6 mm
I	1 1/16" 27.0 mm
J	1 5/8" 41.3 mm

Alternative OmniMount Model

Model #VM-1
Pan and Tilt Mount



(In Inches)